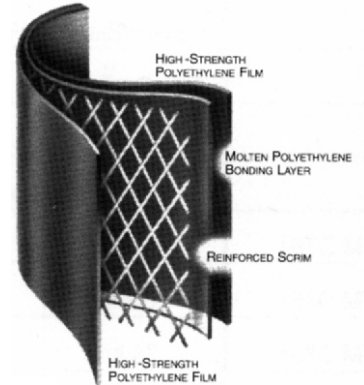


DURA SKRIM® R20DD

PRODUCT DESCRIPTION

DURA SKRIM R20DD consists of virgin outer layers of gray high-strength polyethylene film laminated together with hot molten polyethylene. Both outer layers contain stabilizers to assure long outdoor life. A layer of polyester scrim reinforcement placed between these plies greatly enhances tear resistance and increases service life.

DURA SKRIM's heavy-duty diamond reinforcement responds to tears immediately by surrounding and stopping the tear.

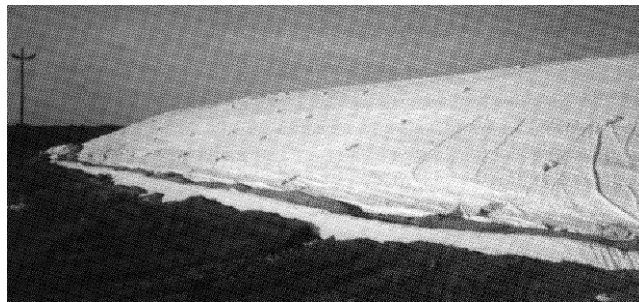


PRODUCT USE

DURA SKRIM R20DD is used in applications that require exceptional outdoor life and demand high puncture and excellent barrier properties. **DURA SKRIM R20DD** is manufactured from a very chemical-resistant, virgin polyethylene.

SIZE & PACKAGING

DURA SKRIM R20DD is available in a variety of widths and lengths. Panel sizes up to 57,000 square feet are available. All panels are accordion folded every six feet and tightly rolled on a heavy-duty core for ease of handling and time-saving installation.



Remediation Cover

COMMON APPLICATIONS

- Modular Tank Liners
- Daily Landfill Covers
- Remediation Liners
- Earthen Liners
- Interim Landfill Caps
- Radon Retarders
- Remediation Covers
- Erosion Control Covers
- Heavy Duty Vapor Retarders



Interim Landfill Cover

Americover®

toll free (800) 747-6095 • local (760) 747-6095 • fax (760) 747-1920

e-mail: sales@americover.com • website: www.americover.com

2067 Wineridge Pl. #F • Escondido, CA 92029

DURA SKRIM® R20DD

		English	Metric
APPEARANCE		Gray/Gray	
THICKNESS, NOMINAL		20 mil	0.51 mm
WEIGHT		78 lbs/MSF	35 kg/MSF
		11.2 oz./yd2	379 GSM
CONSTRUCTION		**Extrusion laminated with scrim reinforcement	
1" TENSILE STRENGTH	ASTM D 7003	75 lbf.	330 N
GRAB TENSILE	ASTM D 7004	102.9 lbf.	458 N
ELONGATION AT PEAK STRENGTH	ASTM D 7003	23%	23%
ELONGATION AT BREAK	ASTM D 7003	750%	750%
TRAPEZOID TEAR*	ASTM D 4533	102 lbf.	454 N
HYDROSTATIC RESISTANCE	ASTM D 751	136 psi	938 kPa
MAXIMUM USE TEMPERATURE		180°F	82°C
MINIMUM USE TEMPERATURE		-70°F	-57°C
PUNCTURE	ASTM D 4833	33.4 lbf.	149 N
PERMEABILITY			
WVTR	ASTM E 96 Method A	0.023 g/100in2/day	0.354 g/m2/day
PERM RATING	ASTM E 96 Method A	0.052 U.S. Perms	0.034 Metric Perms

*Tests are an average of diagonal directions.



DURA SKRIM R20DD is a gray/gray four layer reinforced laminate containing no adhesives. The outer layers consist of high-strength, polyethylene film manufactured using virgin grade resins and stabilizers for UV resistance in exposed applications of three or more years. **DURA SKRIM R20DD** is reinforced with 1000 denier (minimum) scrim reinforcement laid in a diagonal pattern spaced 3/8" apart with an additional machine direction scrim every 3" across the width. The individual plies are laminated

Note: To the best of our knowledge, these are typical property values and are intended as guides only, not as specification limits. AMERICOVER® MAKES NO WARRANTIES AS TO THE FITNESS FOR A SPECIFIC USE OR MERCHANTABILITY OF PRODUCTS REFERRED TO, no guarantee of satisfactory results from reliance upon contained information or recommendations and disclaims all liability for resulting loss or damage.

Americover®

toll free (800) 747-6095 • local (760) 747-6095 • fax (760) 747-1920

e-mail: sales@americover.com

website: www.americover.com

2067 Wineridge Pl. #F • Escondido, CA 92029