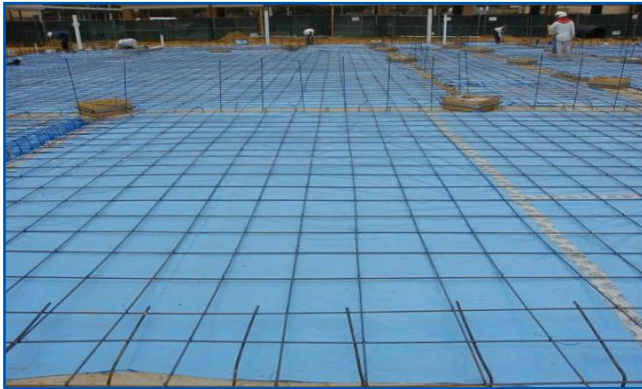


VAPOR BARRIER

10, 15, & 20 MIL VAPOR BARRIERS



PRODUCT DESCRIPTION

Americover Vapor Barrier / Retarder is a high performance material designed for use under concrete slabs to stop moisture migration and to control radon gas, methane, and other soil gases or contaminants.

Americover Vapor Barriers / Retarders are extruded in a single sheet of material composed of virgin polyolefin resins. This high puncture resistant Vapor Barrier / Retarder has superior performance to other materials in the industry and is available in 10 mil, 15 mil and 20 mil.

PRODUCT

PART NUMBER

| | |
|----------------------------|------|
| 10 mil Vapor Barrier | VB10 |
| 15 mil Vapor Barrier | VB15 |
| 20 mil Vapor Barrier | VB20 |

APPLICATIONS

- Under-Slab Vapor Retarder
- Radon Retarder
- Crawl Spaces
- Foundation Wall Vapor Retarder

PRODUCT USE/INSTALLATION

Under Concrete Slab:

Install Americover Vapor Barrier/ Retarder over tamped earth, sand or aggregate base. Unroll and completely cover the area to receive the building slab or other specified areas. The seams must overlap a minimum of six inches and be sealed with Sealing Tape or heat welded. All exposed penetrations also must be sealed using Sealing Tape. A physical inspection of the area should be performed prior to installation.

LIMITED WARRANTY

Americover warrants this product to meet the published specifications and to be free of defects in workmanship and materials at the time of shipment from our factory.

If any material proves to contain manufacture defects that substantially affect the performance, then Americover will at their option replace the material or refund the purchase price. This limited warranty is the only warranty offered by Americover as it relates to Vapor Barrier products. There are no other warranties, including the implied warranties of merchantability or fitness for a particular purpose. Americover specifically disclaims liability for any incidental, consequential,

VAPOR BARRIER

10, 15, & 20 MIL VAPOR BARRIERS

| PROPERTIES | TEST METHOD | 10 MIL VAPOR BARRIER | 15 MIL VAPOR BARRIER | 20 MIL VAPOR BARRIER |
|--|--|----------------------------------|----------------------------------|----------------------------------|
| ASTM 1745, Class A, B, C - standard specification for water vapor retarders used in contact with soil or granular fill under concrete slabs. ISO 9001-2008 CERTIFIED | | | | |
| Physical Properties | ASTM E1745 Class A | 10 mil | 15 mil | 20 mil |
| Water Vapor Permeance | ASTM F1249 - Vapor Transmission Rate | 0.1 perms | 0.018 perms | 0.0055 perms |
| Puncture Resistance | ASTM 1709 - Test Method for impact resistance of plastic film by free-fallen dart method @ 2200 grams | 3000 grams | 4000 grams | 5600 grams |
| Tensile Strength | ASTM D882 - Method for tensile properties of thin plastic sheeting @ 45 lbf/in ³ | 58 lbf/in ³ | 64 lbf/in ³ | 81 lbf/in ³ |
| Methane Transmission Rate | ASTM 1434 - Standard test method for determining gas permeability (GTR) | 298.01 GTR | 252.55 GTR | 163.71 GTR |
| Life Expectancy | ASTM E154 - Test methods for vapor retarders used in contact with Earth under concrete slabs, on walls, or as a ground cover | Indefinite | Indefinite | Indefinite |
| Roll Dimensions | - | 14'X210' 2800 ft ² | 14'X140' 1960 ft ² | 10'X150' 1500 ft ² |
| Roll Weight | - | 142 lbs | 142 lbs | 180 lbs |
| Note: perm unit = grains/(ft ² •HR•in•HG) GTR = gas transmission rate | | | | |

The information provided herein is based upon data believed to be reliable. All testing is performed in accordance with ASTM standards and procedures. All values are typical and nominal and do not represent either minimum or maximum performance of the product. Although the information is accurate to the best of our knowledge and belief, no representation of warranty or guarantee is made as to the suitability or completeness of such information. Likewise, no representation of warranty or guarantee, express or implied, or merchantability, fitness or otherwise, is made as to product application for a particular use.

