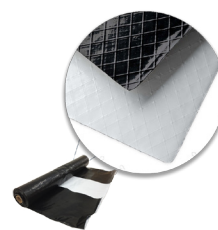


# Crawl Space Vapor Barrier Product Line Card



Product	10 Mil Pro Crawl Anti-Mold	10 Mil Pro Crawl Barrier	20 Mil String Reinforced	12 Mil String Reinforced	8 Mil String Reinforced	6 Mil String Reinforced
Features	Best Value	Great Value	Top of the Line	Heavy Duty	Medium Duty	Economy
Top / Bottom Colors	White / Pink	White / White	White / White	White / Black	White / Black	White / Black White / White
Water Vapor Permeance	.022 perms	.022 perms	.022 perms	.023 perms	.039 perms	.042 perms
Shipping Method	Ground	Ground	Freight	Freight	Freight	Ground

## Compatible Soil Conditions

Soil containing large rocks or broken concrete	X	X	✓	X	X	X
Soil containing small tree roots or pea gravel	✓	✓	✓	✓	✓	X
Soil without the presence of rocks or debris	✓	✓	✓	✓	✓	✓

## Impact Resistance Suitability

Heavy foot traffic and storage areas	X	X	✓	X	X	X
Occasional / Minimal foot traffic and light storage	✓	✓	X	✓	✓	X
Not for trafficked areas, nor areas used for storage	X	X	X	X	X	✓



**2-Sided Butyl Tape**

1.5" x 100'



**Vapor Tape**

4" x 180'



**Ratchet Fasteners**

1/4" diameter | 1.5" long