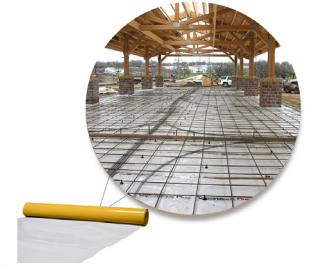
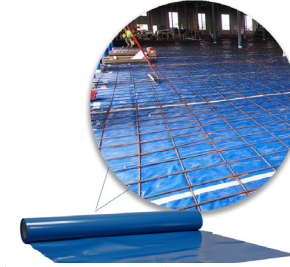
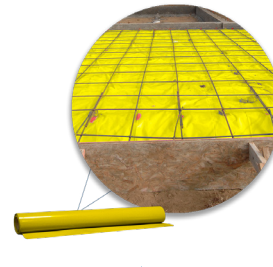
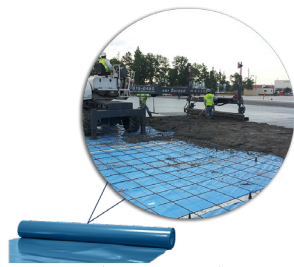
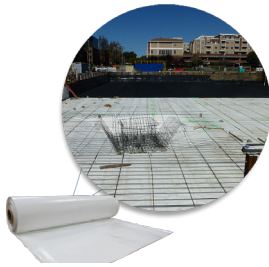
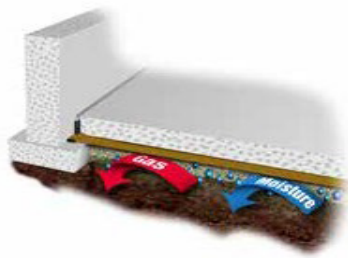
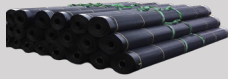


Under Slab Vapor Barrier Product Line Card



	Pro Crawl Barrier®	Vapor Barrier Blue			Vapor Barrier Yellow		VaporBlock®		VaporBlock® Plus
Cost per sqft.	\$\$\$	\$\$ - \$\$\$			\$\$ - \$\$\$		\$\$ - \$\$\$		\$\$\$\$\$
Passes ASTM G21	X	X			X		X		X
Meets ASTM E1745	✓	✓			✓		✓		✓
Passes ASTM D1434	X	✓			X		✓		✓
Passes ASTM E96	X	X			X		✓		✓
Passes ASTM F1249	✓	✓			✓		X		X
Certified Radon Retarder	X	✓			✓		✓		✓
PRODUCT INFORMATION									
Mil Thickness	10 Mil	10 Mil	15 Mil	10 Mil	10 Mil	15 Mil	10 Mil	15 Mil	20 Mil
Perm Rating	.0228	0.018	0.0078	0.055	.0228	0.0158	0.0146	.01	.0064
Puncture Resistance (measured in grams)	3210 g	3000 g	4000 g	5600 g	3210 g	3930 g	2600 g	3210 g	2600 g
Roll Width (ft)	10'	14'	14'	12'	14'	14'	15'	12'	10'
Roll Length (ft)	100'	210'	140'	150'	210'	140'	200'	200'	150'
Shipping Method	Ground	Freight Only			Freight Only		Freight Only		Freight Only

Geomembrane Liners & Geotextiles



- ▶ **HDPE/LLDPE** - High Density and Low Linear Density Polyethylene geomembrane liners are custom fabricated and available in a wide range of mil thicknesses up to 100 mil.
- ▶ **PVC** - Polyvinyl chloride is one of the most versatile plastic sheeting liners. Available in mil thicknesses from 20 mil to 60 mil.
- ▶ **Geotextiles** - Custom fabricated non-woven geotextile fabrics are manufactured to look and feel like felt fabric used for filtration and separation in a variety of applications to allow water to pass or as an overlay fabric.
- ▶ **Woven Coated Poly** - Custom Fabricated woven poly is a great outdoor liner or cover. Available in solid white, black or two-sided white/black.

Drainage Boards - Used in Under Slab Foundations, and on Foundation Walls to control the flow of water and prevent water pooling.



EnkaDrain is a drainage mat with a drainage core made of fused, entangled filaments bonded to a filtering non-woven geocomposite fabric.



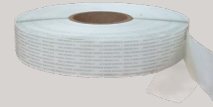
Dimpled membrane board made with a polypropylene geotextile and hdpe can be used in both vertical and horizontal applications.

Double Sided Tapes - Used between overlapping vapor barrier panels and between the vapor barrier and the structure



Butyl Tape

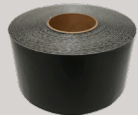
- ▶ 20 mil thick butyl rubber adhesive with a lightweight reinforcement to prevent stretching.
- ▶ Roll Size: 1.5" x 100'



Clear DS Tape

- ▶ 10 mil Clear, low-stretch core film coated on both sides with a transparent, synthetic rubber adhesive.
- ▶ Roll Size: Available in 1.5" x 300'

Seaming/Sealing Tapes - Used to seam panels of vapor barrier to other panels and seal it to the walls or frame. Great for patch and repair as well.



R25B Tape

- ▶ Aggressive black polymer vapor tape that can withstand direct sunlight
- ▶ Available in 4" x 100'



Vapor Tape

- ▶ Heavy duty white polyethylene film vapor tape
- ▶ Available in 4" x 180'



Reinforced Seaming Tape

- ▶ Highly tear resistant vapor tape offered in White, Clear, or Black
- ▶ Available in 4" x 50'